

Carnet de bord de
l'Aventurier
Heritage – history



Oratoire Ste Catherine

Saint Paul la Roche



this booklet belongs to :

.....
.....



The walk begins in front of
the geosite



Watch out for cars
and other motor
vehicles

Before we start, we present you

« **Pépito** ».

he will guide you throughout
your tour. Have fun and

direction

place des hirondelles
(town hall)



The circuit map
is on page 19



During the course, you will
find this sculpture.
Where is it ?

.....

Welcome to Saint Paul la Roche

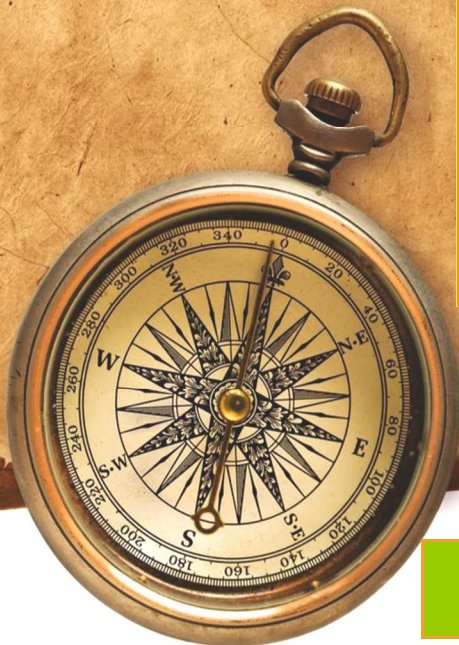
This booklet is offered to you by the Tourist Information Office of the Community of Périgord-Limousin municipalities. You will find many games that will allow you to better know the town while having fun.

Circuit découverte :



-  - Géosite
-  - Rue Serpentine
-  - Place de l'église
-  - Rue du Lavoir
-  - Route de la Roche Noire
-  - Ruelle Bernard de Villars
-  - Rue de la Croix Templière
-  - Rue Serpentine
-  - Route du Minaret
-  - Chemin de la Mazelle
-  - Chemin du Marguillier

Saint Paul la Roche is a village located on the north-east of the Dordogne department adjacent the Haute-Vienne and making it part of the Périgord-Limousin Regional Natural Park. It is a place where heritage, hills and rivers mix.



Saint Paul la Roche is on the border of the Périgord Vert.

Saint Paul la Roche owes its name partly to a giant quartz diamond, the White Rock, that came out of the green landscape millions of years ago.

A village of 531 souls, this area is charged in history : from neolithique to templars, man has left traces.

Start from the geosite



SAINT-PAUL-la-ROCHE (Dordogne) — La Roche

This is what we could see before the exploitation of quartz .

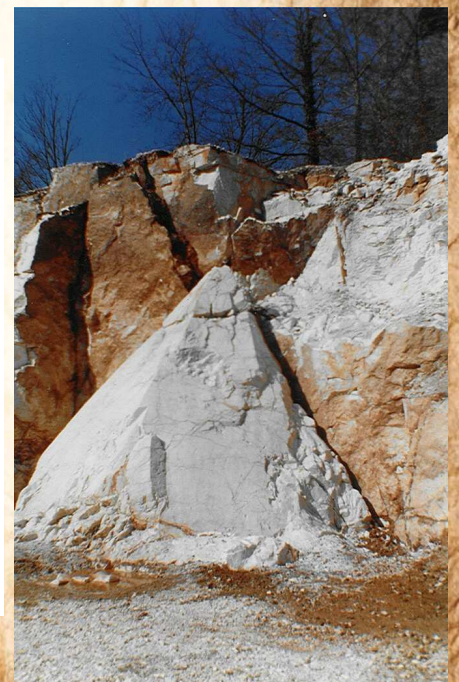
By the way, how big was the quartz pyramid found in the quarry ?

Answer :

Story : a hundred years ago, a very big quartz rock was found, it was so pure that it was used in very high quality optical.

It was used in the making of porcelaine and the making of portholes for the NASA until the stock depletion.

In 1975, a quartz pyramid of 20 tons (see opposite) was found in the quarry, unfortunatley this rarity of nature was reduced to rubble.

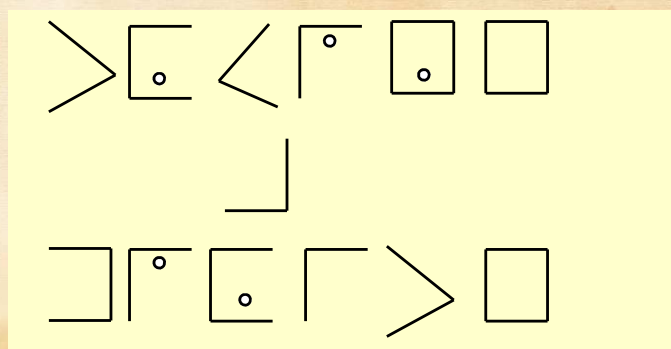


Spot the 7 differences on the Town Hall in front of you



The templars used secret codes to send messages. With the help of this board underneath, find the sentence to know which direction to take.

| | | | | | |
|--------------|--------------|--------------|--------------|--------------|--------------|
| A | B | C | J | K | L |
| D | E | F | M | N | O |
| G | H | I | P | Q | R |
| T | S | U | X | W | Y |
| | V | | | Z | |



Answer :

Little exercise : find the cut up words
(the beginning is in color)

ure

Che

Comman

Péle

pliers

teaux

voux

derie

Arm

Cha

rins

Templ

1st word :

2nd word :

3rd word :

4th word :

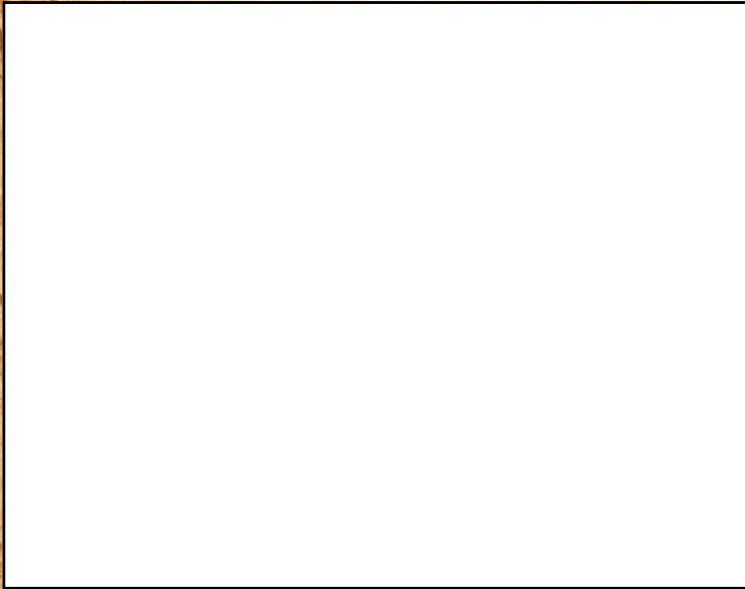
5th word :

6th word :
.....



Join the hundred year old tree in the village near the church.
What is it called ?

.....



Draw the keyhole on the church door.



With the alphabet below find the sentence and answer the question.

| | | | | | | | | | | | | | | | | | | | | | | | | | |
|---|---|---|---|---|---|---|---|---|---|---|---|---|---|---|---|---|---|---|---|---|---|---|---|---|---|
| α | β | χ | δ | ε | φ | γ | η | ι | φ | κ | λ | μ | ν | ο | π | θ | ρ | σ | τ | υ | ω | ξ | ψ | ζ | |
| a | b | c | d | e | f | g | h | i | j | k | l | m | n | o | p | q | r | s | t | u | v | w | x | y | z |

χομβιεν δε ρονδσ σε τρουωεντ αυ δεσσυσ
δε λα πορτε δε λ'εγλισε ?

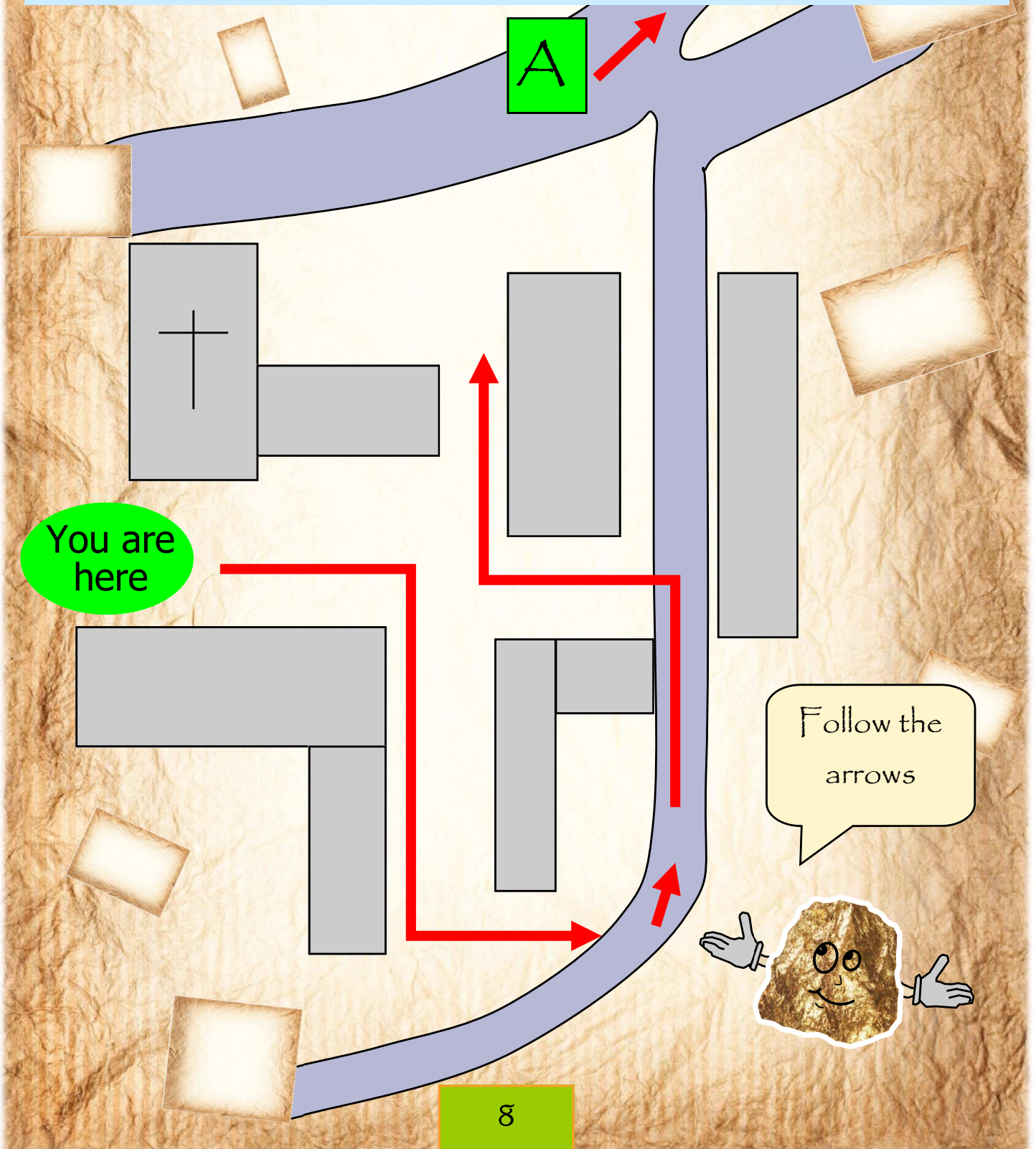


Answer :

Church Saint Pierre Saint Paul.

The little story, this building is a roman base restored during several periods. In 1866, at a city council whose agenda was the vote of credit for the renovation of the church, the nave of the latter collapsed.

We had to decide now to rebuild a new church, larger to accommodate all his flock.



Find this stone on a house and note the date written above.



Answer :

When you are at the crossroads **A**, take the direction stade.

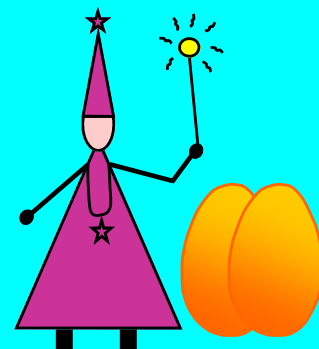
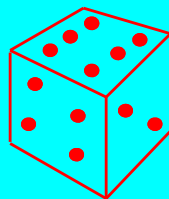
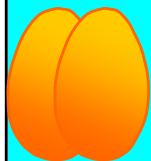


Go past this building. Decipher the rebus to find out what function it had.



Le mien
Le tien
La

Ma
Ta
.....



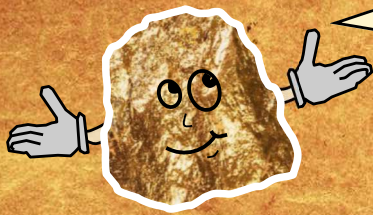
Answer :

How many wars are listed on the Memorial?
Name them.

.....

.....

.....



Turn left to take the little white lane opposite this sign.

In this lane can be seen several sorts of trees, such as oak and chestnut. Match the fruit to its leaves.



Oak

Chestnut

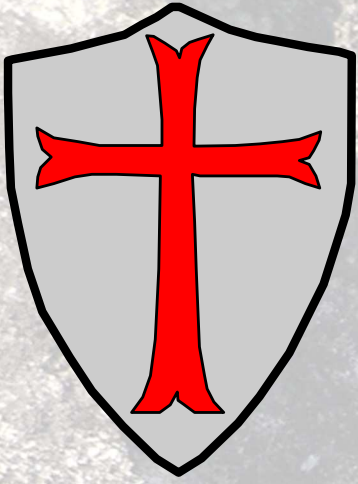


It's your turn, find the words in the

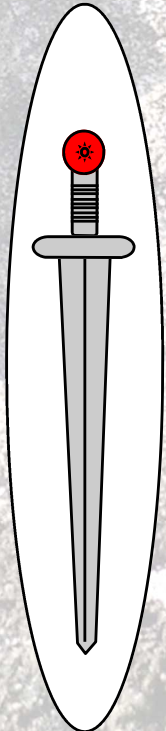
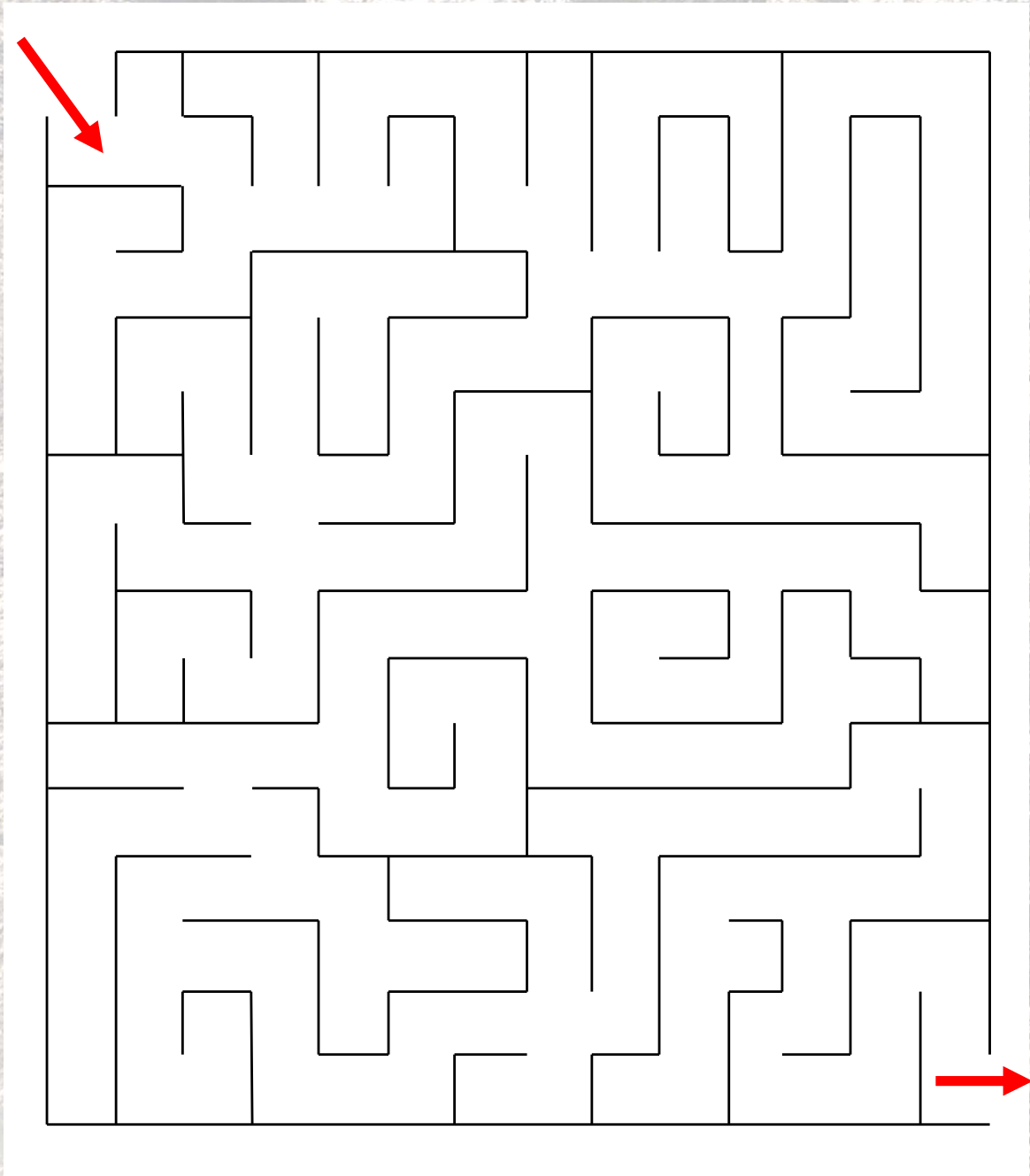
| | | | | | | | | | | | | | | |
|---|---|---|---|---|---|---|---|---|---|---|---|---|---|-------------|
| A | R | D | G | I | O | S | B | L | A | N | C | H | E | AGEE |
| G | I | W | V | N | G | A | A | D | E | Y | T | P | O | ARMURE |
| E | M | U | L | P | N | I | M | A | I | S | O | N | S | BLANCHE |
| E | N | E | E | T | O | N | I | Y | E | V | H | J | K | CHÂTEAU |
| R | L | G | A | Q | S | T | B | O | L | P | N | C | E | CHEVALIER |
| O | I | L | R | P | I | P | S | E | P | E | E | H | O | COMMANDERIE |
| C | R | I | T | C | E | A | R | M | U | R | E | A | I | ECUYER |
| H | U | S | F | B | S | U | O | H | J | C | G | T | Q | EGLISE |
| E | S | E | S | U | Q | L | Z | I | X | A | E | E | F | EPEE |
| C | H | E | V | A | L | I | E | R | A | X | O | A | T | GEOSITE |
| P | R | P | L | R | S | X | A | E | R | N | S | U | J | MAISON |
| M | F | A | T | E | M | P | L | I | E | R | I | L | N | ROCHE |
| C | O | M | M | A | N | D | E | R | I | E | T | R | Y | SAINT PAUL |
| T | I | H | E | C | U | Y | E | R | V | P | E | U | E | TEMPLIER |

Put the letters in order to find a saying.

iaSnt -Perrie et aluP vieuxpul,
tes opur entre sojur geandreux.



Find the path to connect the sheild to the sword.



Find the definitions by putting the right letter in the circles.



A



Coyau

Cutaway from the roof used to keep rainwater away from the wall.



B



Liming

Action to pass the milk of lime (water + lime) to clean up the openings of the houses.



C



Wells

A hole dug into the ground to get to groundwater (natural reserve of water) or recover runoff.



D



Quartz pyramid

Since a hundred years, in Saint Paul la Roche we have been extracting quartz. In 1975 was discovered a quartz pyramid of 20 tons.

Genoese



E



Cornice composed of tiles intended to keep rainwater away from the facade and serving as decoration for the roof.

When you arrive at the crossroads
at the cross, turn left.



From this spot you can see the old templar
commandery of the village.
Bernard de Villars was the commander at
the moment of the arrests of the Templars
in all of France the 13th October 1307.

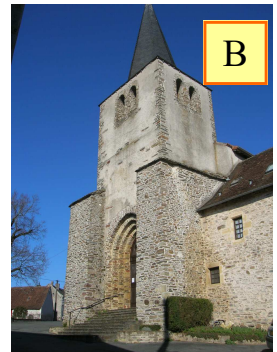


Under the roof of the Town Hall, the
primary school, with the collaboration of
the Périgord-Limousin Regional Natural
Park have realised drawings on wood
panels that had prepared the children of
the institute of St Jory de Chalais.
This structure was put in place by the
village road workers, in order to protect the
walls from the swallows' feints.
These birds are part of the protected
species.

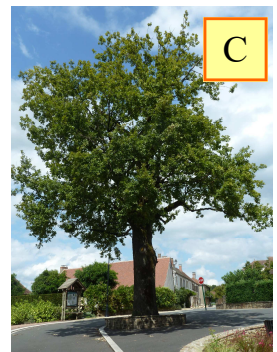
Put the corresponding letters on the map the buildings, objects or trees that are shown in the photos.



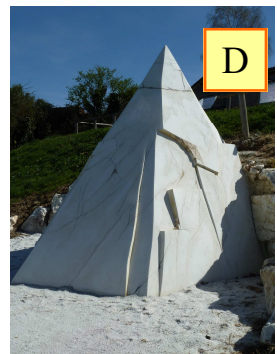
A



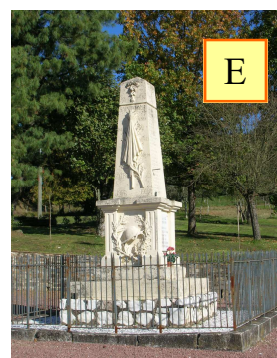
B



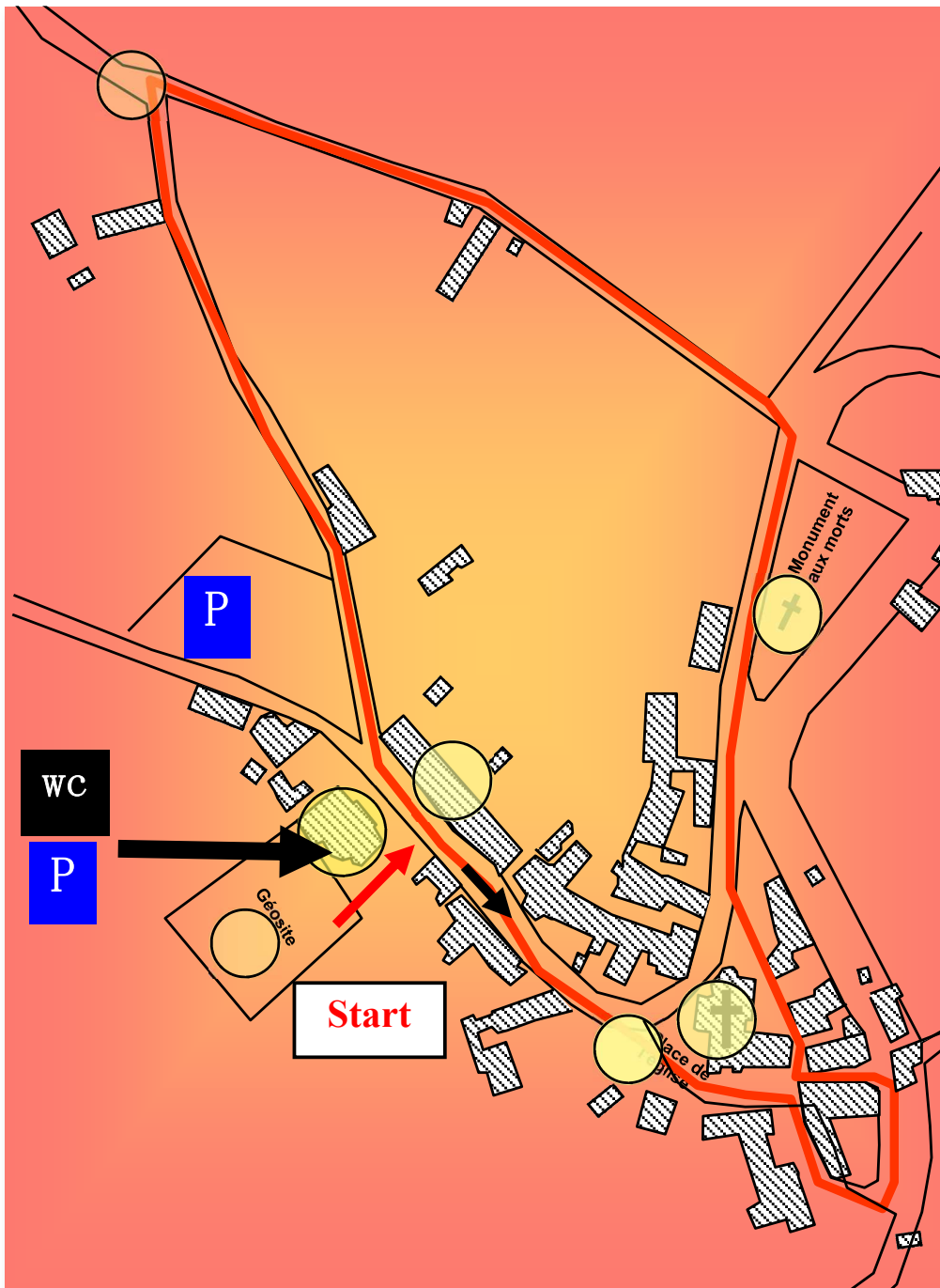
C



D



E

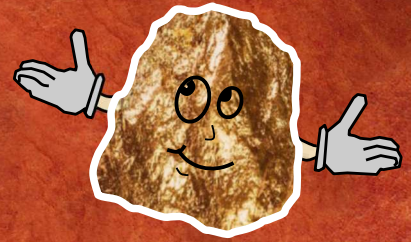


G



F

See you soon!
For new adventures
in territory!



Other booklets

Cognac sur l'Isle
La coquille
Jumilhac le Grand
Miallet
Négrondes
Saint Front d'Alemps
Saint Jory de Chalais
Saint Priest les Fougères
Thiviers

Bureau d'Information
Touristique de Thiviers
Tél.: 05.53.55.12.50

Bureau d'Information
Touristique
de St Jean de Côte
Tél.: 05 53 62 14 15

Bureau d'Information
Touristique
de Jumilhac le Grand
Tél.: 05.53.52.55.43

